

---

R. L.

---

**FENDER**

---

CONSTRUCTION

---

COMPANY, INC.

---

January 9, 2012

BOOZ ALLEN HAMILTON

**ADDENDA #2**

1. SCHEDULE - The owner has indicated the project will not start until Mid-February. Please see the attached schedule.
  
2. ELECTRIC - Please see the attached audio visual detail AV001 AND AV002.

Act ID	Description	Orig Dur	Early Start	Early Finish
<b>PRECONSTRUCTION</b>				
1000	SUBMIT DOOR/MESH PRICING	1	23DEC11 A	23DEC11 A
1010	RECEIVE DOOR/MEASH APPROVALS	15	26DEC11 A	06JAN12
1040	RECEIVE CD'S	1	03JAN12 A	03JAN12 A
1050	BID CD'S	22	03JAN12 A	17JAN12
1020	ORDER/DELIVER MESH	20	09JAN12	03FEB12
1030	SHOP DRAWINGS/FABRICATE/DELIVER FRAMES	25	09JAN12	10FEB12
1060	CD APPROVAL	3	18JAN12	20JAN12

Act ID	Description	Orig Dur	Early Start	Early Finish
<b>CONSTRUCTION</b>				
1070	START CONSTRUCTION	1	15FEB12	15FEB12
1080	DEMOLITION	3	15FEB12	17FEB12
1090	METAL STUDS	5	20FEB12	24FEB12
1110	PME WALL ROUGH	10	27FEB12	09MAR12
1120	PME OVERHEAD ROUGH	10	27FEB12	09MAR12
1130	INSTALL HOLLOW METAL FRAMES	3	27FEB12	29FEB12
1100	WIRE MESH	10	29FEB12	13MAR12
1140	GWB/SPACKLE	10	14MAR12	27MAR12
1150	PRIME	5	28MAR12	03APR12
1160	GRID	5	04APR12	10APR12
1170	PAINT OFFICES	5	11APR12	17APR12
1190	MILLWORK	4	11APR12	16APR12
1220	LIGHTS	5	11APR12	17APR12
1230	SPRINKLERS	5	11APR12	17APR12
1240	HVAC DIFFUSERS	5	11APR12	17APR12
1210	CEILING TILES	5	18APR12	24APR12
1250	CARPET	5	25APR12	01MAY12
1200	DOORS/HARDWARE	4	26APR12	01MAY12
1180	PLOMYX COMMON AREAS	5	02MAY12	08MAY12
1260	RUBBER BASE	1	09MAY12	09MAY12

Act ID	Description	Orig Dur	Early Start	Early Finish
<b>WORK BY OWNER</b>				
1270	INSTALL FURNITURE	5	10MAY12	16MAY12
1280	KEYING	5	10MAY12	16MAY12
1290	SECURITY	5	10MAY12	16MAY12
1300	PHONE/DATA	5	10MAY12	16MAY12

I SUBMIT DOOR/MESH PRICING  
 RECEIVE DOOR/MEASH APPROVALS  
 RECEIVE CD'S  
 BID CD'S  
 ORDER/DELIVER MESH  
 SHOP DRAWINGS/FABRICATE/DELIVER FRAMES \*  
 CD APPROVAL

I START CONSTRUCTION  
 DEMOLITION  
 METAL STUDS  
 PME WALL ROUGH  
 PME OVERHEAD ROUGH  
 INSTALL HOLLOW METAL FRAMES  
 WIRE MESH  
 GWB/SPACKLE  
 PRIME  
 GRID  
 PAINT OFFICES  
 MILLWORK  
 LIGHTS  
 SPRINKLERS  
 HVAC DIFFUSERS  
 CEILING TILES  
 CARPET  
 DOORS/HARDWARE  
 PLOMYX COMMON AREAS  
 RUBBER BASE

INSTALL FURNITURE  
 KEYING  
 SECURITY  
 PHONE/DATA

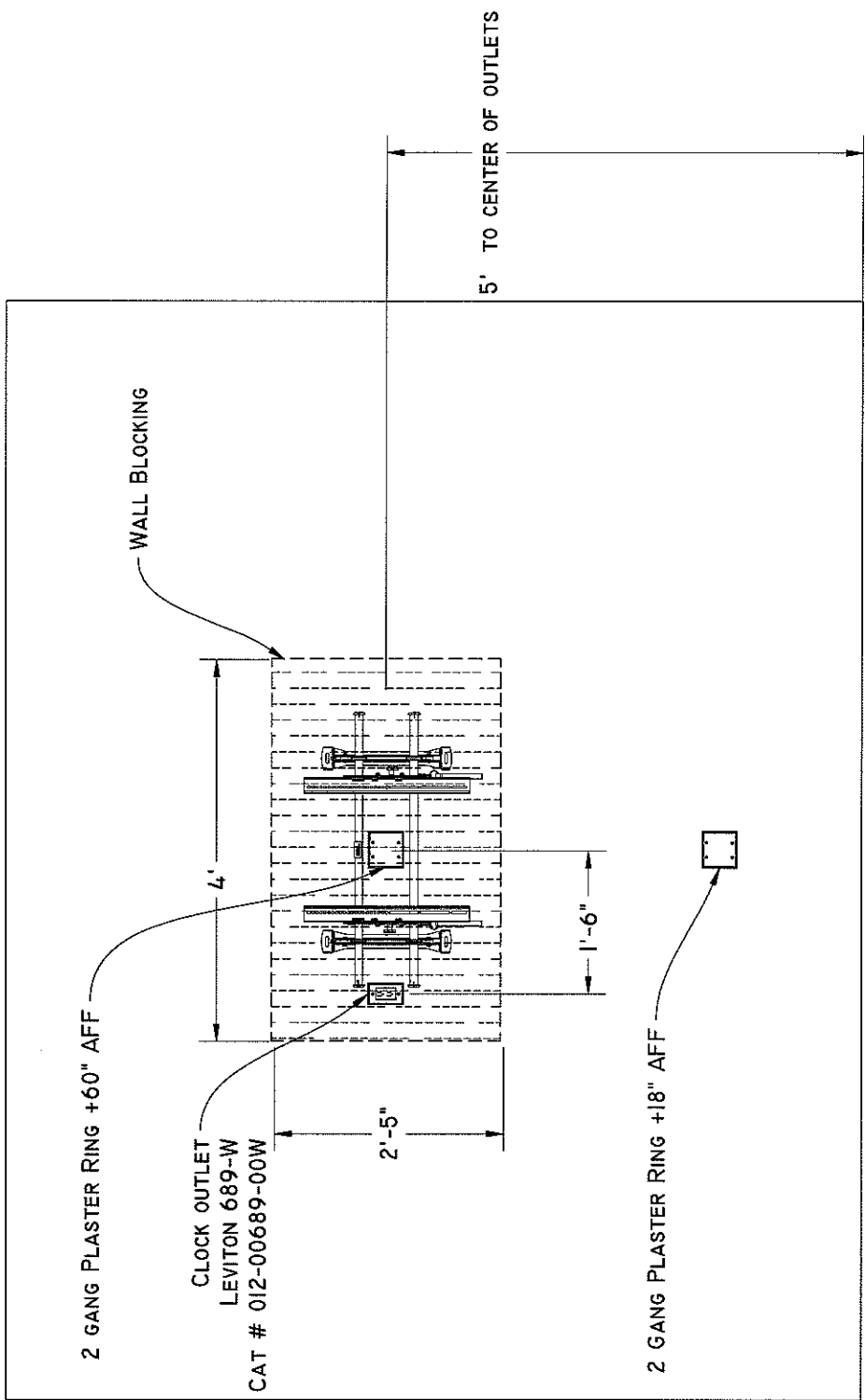
Start date	19DEC11
Finish date	16MAY12
Data date	19DEC11
Run date	09JAN12
Page number	1A

© Primavera Systems, Inc.

**FENDER CONSTRUCTION**  
**Booz Allen Hamilton - PRELIMINARY**

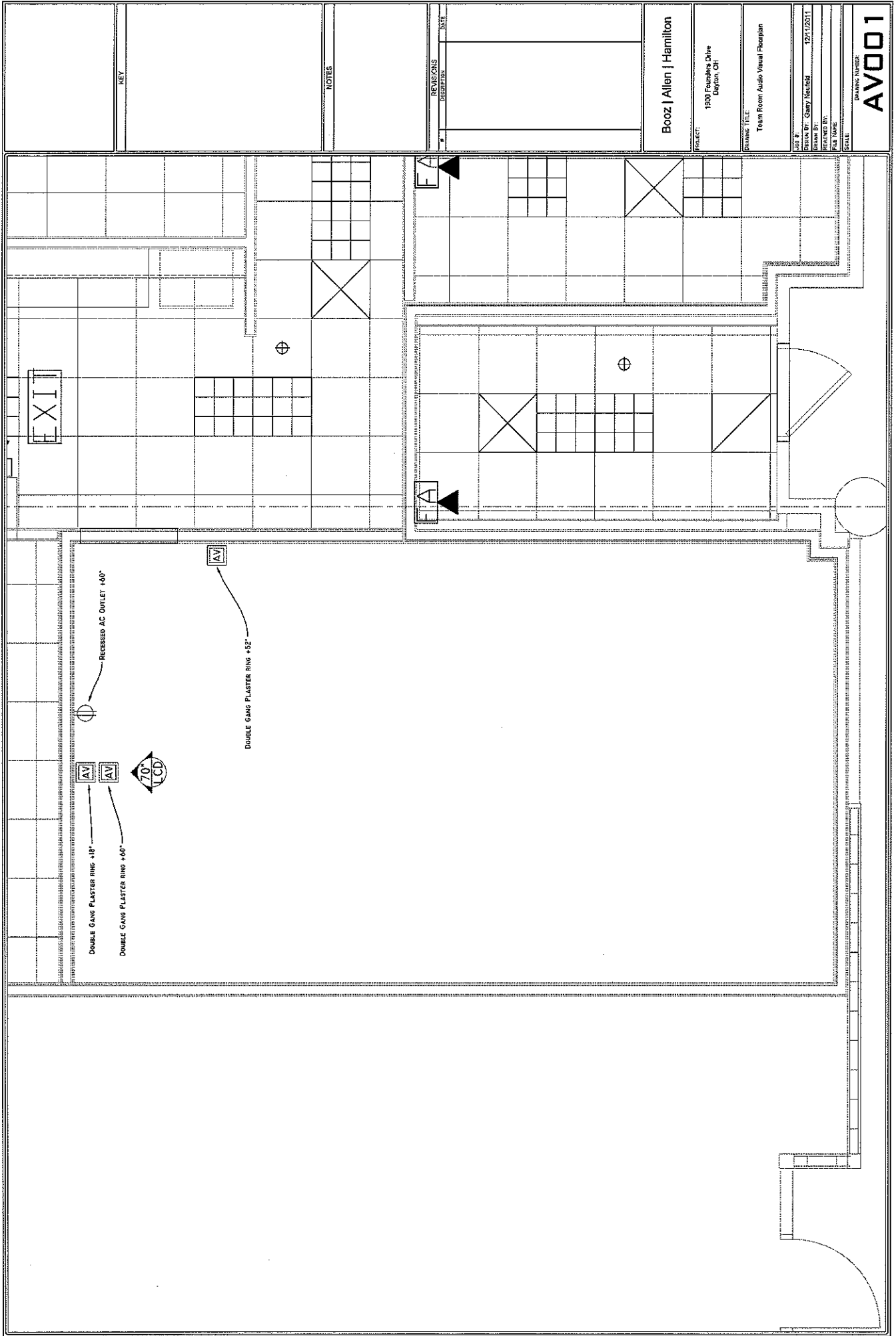
■ Early bar  
 ■ Progress bar  
 ■ Critical bar  
 — Summary bar  
 ◆ Start milestone point  
 ◆ Finish milestone point

KEY	
NOTES	
REVISIONS	DATE
DESCRIPTION	
Booz   Allen   Hamilton	
PROJECT: 1900 Founders Drive Dayton, OH	
DRAWING TITLE: Teeth Room Audio Visual Elevation	
JOB #	12112011
DRAWN BY: Gary Neufeld	
CHECKED BY:	
FILE NAME:	
SCALE:	
DRAWING NUMBER:	<b>AV002</b>



70" LCD WALL ELEVATION DETAIL  
SINGLE 70" LCD

Appendix 2



KEY

NOTES

REVISIONS	DESCRIPTION	DATE

Booz | Allen | Hamilton

PROJECT:  
1800 Exchange Drive  
Dayton, OH

EXHIBIT TITLE:  
Teen Room Audio Visual Floorplan

JOB #  
DESIGN BY: Gary Newell  
SCALE: 1/8" = 1'-0"  
FILE NAME:  
DATE:

DR. SHEET NUMBER  
**AV001**

APPENDIX 2